

ActiveXperts SMS Messaging Server

Framework to send, receive and process SMS messages.

Design and implement SMS applications. Receive messages, process them automatically and generate custom reply messages. Use a GSM modem, SMPP or an HTTP subscription.

■ Design and Implement SMS applications

With ActiveXperts SMS Messaging Server designing SMS based applications is easy.

Send, receive and process messages according to your business logic using your favorite Windows scripting / programming language.

Tools are included for the basics, like setting up an SMS or e-mail mailing from any data source.

Key features:

- Automatic sending, receiving and processing of SMS messages
- Framework to build custom SMS based applications
- Open System. The system offers a full-featured API
- Use any Windows programming language to add business logic to your SMS solution
- Runs on all Windows platforms (32/64bit)
- Supports SMS through GSM modem, SMPP and HTTP
- Supports E-mail through (secure) SMTP and POP3

■ Scenario's

ActiveXperts SMS Messaging Server has an extensive track record built by many customers and projects, ranging from small local projects to large global projects.

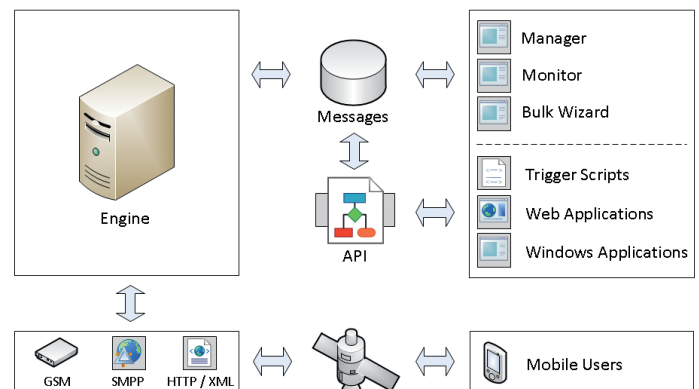
A brief collection:

- Emergency systems. Haiti Earthquake emergency response system
- National Elections. Voting systems for Afghanistan, Haiti, Kosovo and other countries
- Aid/Medical. HIV prevention system for African countries
- School. Custom student notification systems for schools
- Commercial. Mass SMS marketing mailing systems
- Sports. Voting systems for 'man of the match' for football clubs
- Music. Radio station systems to vote for a song
- Traffic. GPS tracking systems for logistic/transport companies

- Reservation. Reservation systems through SMS for various companies
- ICT. Restart services/computers remotely through SMS

■ Messaging Server Overview

There are a number of modules that make up the SMS Messaging Server system. This is a schematic overview:



The SMS Messaging Server engine runs as a service in the background. It's responsible for actually sending and receiving messages.

Messages are sent by the engine through the use of communication 'channels'.

These are some of the available channels:

- SMPP. A single connection to an SMSC
- HTTP. A single provider configuration
- GSM. A GSM device
- POP3. An e-mail inbox
- SMTP. An outgoing e-mail address

All channels can be active simultaneously to increase throughput and reliability.

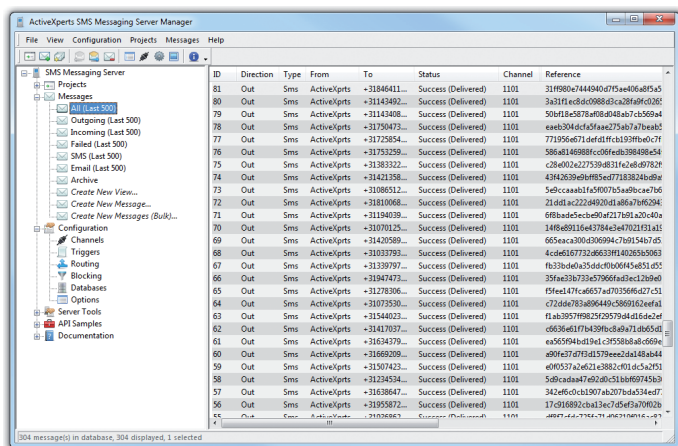
The engine uses the message database to store all messages in the system. The API is an easy to use ActiveX/COM based interface for accessing the database.

The following user interface modules are included in the SMS Messaging Server:

- **Manager.** Use it to view all messages and projects, communication channels and routes.
- **Monitor.** Provides a detailed view of what is currently happening inside the SMS Messaging Server engine.
- **Bulk Wizard.** A convenient interface for quickly sending out mass mailings or queries to your customers.

■ Manager Application

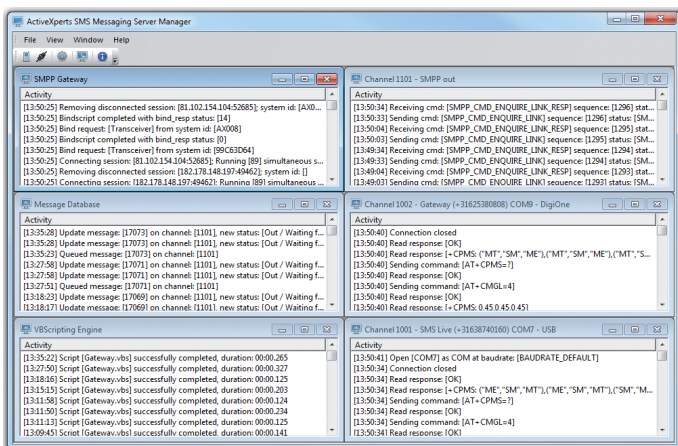
The manager application provides an overview of all incoming and outgoing messages in the system.



With the manager application it's possible to create custom views of all messages in the system, create and configure channels and manage your projects.

■ Monitor Application

Use the monitor application to get a detailed view of what is currently happening inside the SMS Messaging Server engine.



■ Bulk Wizard

The bulk wizard is a convenient way to quickly send out mass SMS or e-mail mailings.

Whether the phone numbers or e-mail addresses are stored in an Excell sheet, CSV file or any other kind of database. Creating a mailing can be done in just a couple of steps.

■ Projects

It's easy to create your own project in the SMS Messaging Server. From the manager it's just a few steps to get to a working project with a customizable trigger script which will automatically process your incoming messages.

Trigger scripts define the business logic behind incoming messages in your application. By default they are defined in VBScript. But because of the flexible ActiveX/COM based API it's possible to use nearly all Windows based programming environments to create your business logic. For example: C#, VB.Net, ASP or PHP.

Here's an example of a minimal trigger script:

```
Process an incoming message using the API

Function ProcessMessage( numMessageID )
    Set objMessageDB = CreateObject( "AxMmServer.MessageDB" )
    Set objConstants = CreateObject( "AxMmServer.Constants" )

    objMessageDB.Open ' Open the Message Database

    ' Get message record from the database
    Set objMessageIn = objMessageDB.FindFirstMessage( "ID = " & numMessageID )

    ' Create new message (the reply message)
    Set objMessageOut = objMessageDB.Create
    objMessageOut.DirectionID = objConstants.MESSAGEIDIRECTION_OUT
    objMessageOut.StatusID = objConstants.MESSAGESTATUS_PENDING
    objMessageOut.TypeID = objMessageIn.TypeID
    objMessageOut.ToAddress = objMessageIn.FromAddress
    objMessageOut.ChannelID = 0
    objMessageOut.Body = "Thanks for your message!"
    objMessageDB.Save objMessageOut

    objMessageDB.Close ' Close the Message Database
End Function
```

The SMS Messaging Server comes installed with a great number of samples for using the API in a lot of different programming environments including those mentioned above.

System Requirements

- Windows 2008 (R2) / 2003 / 8 / 7 / Vista / XP. Both 32bit and 64bit on all supported Windows version
- 100MB of free disk space
- Recommended: MS SQL Server 2005 (or higher) or MySQL 5.0 (or higher).

Visit www.activexperts.com/sms-messaging-server for more information.

Download your evaluation version at www.activexperts.com/download

Requirements: Windows 2008 (R2) / 2003 / 8 / 7 / Vista / XP, 100MB of free disk space