

# ActiveXperts Network Monitor

Network, server and virtualization monitoring solution

ActiveXperts Network Monitor is the leading solution for monitoring all aspects of your network, virtualization servers, computers and devices. It is used by thousands of customers across the world.

## How it works

ActiveXperts Network Monitor runs on a single Windows server, without agents required on the monitored systems. It monitors multiple platforms simultaneously, including Windows and Linux. It has many built-in checks and also allows administrators to create custom checks using PowerShell, VBScript or Linux Shell Scripts.

## Engine

The engine can monitor over a hundred checks simultaneously thanks to its high-performance, multi-threaded architecture. The engine can be fully tuned and offers advanced logging and tracing.

## Monitor Server Virtualization

VMware ESX(i) - Citrix XenServer - Microsoft Hyper-V

## Monitor Network Services

Dhcp - Dns - Ftp - Http(s) - Icmp - Imap - Ldap - Nntp - Ntp - Pop3 - Radius - Sftp - Sntp - Sntp/Pop3 Roundtrip - Smpp - Snmp Get - Snmp Traps - Tcp - Tftp - TraceRoute

## Monitor Windows

Active Directory - Anti-Virus - Citrix Ica - Citrix XenApp - Cpu - Directory - Disk Drives - Disk Space - Event Log - File - Memory - MS BizTalk - MS Exchange - MS Index Server - MS IIS Server - MS Isa Server - MS SharePoint - MS Sql Server - MS Message Queue - MS Terminal Server - Performance Counters - PowerShell - Printer - Process - Registry - Remote Command - Removable Drives - ScheduledTask - Service - VBScript - Windows Defender

## Monitor Linux

SSH Shell Scripts - RSH Shell Scripts

## Monitor Databases

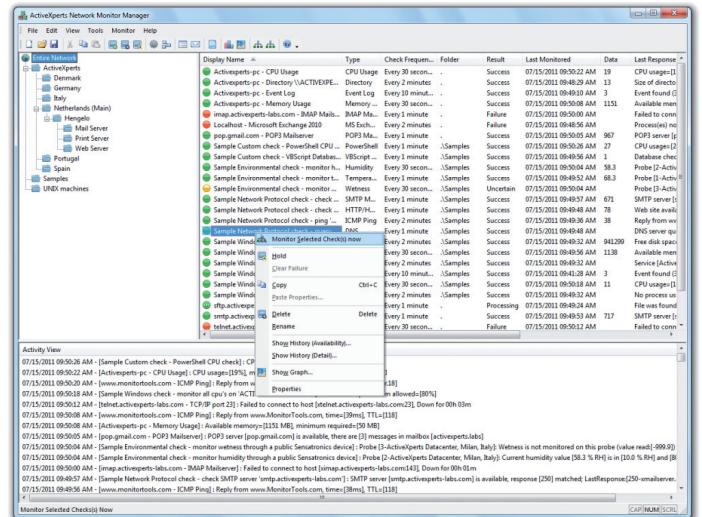
IBM DB2 - Informix - MS Access - MS SQL - MySQL - Oracle - Progress - Paradox - SyBase - any ODBC or ADO compatible database

## Monitor Environment

Temperature - Humidity - Light - Motion - Resistance - Smoke - Water Leaks - Door - Power - Switch (NO/NC)

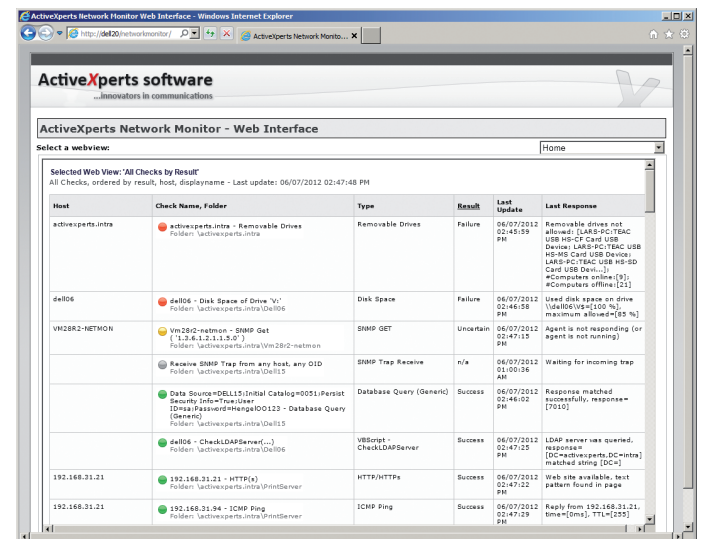
## Manager

Use the Manager to configure checks and view results.



## Web Interface

Use the Web Interface to view results from any place in the world. The Web Interface can be fully customized. Categorize the information the way you want. Adjust colors, sorting, dimensions, etc.



The Web Interface has the following advantages:

- Only requires one port on the firewall (for instance, port 80)
- No additional software installed on the client PC (i.e. no ActiveX controls, no Java Applets), no Java Scripting

- Web interface can be fully customized by the use of XSL style sheets
- Easy to monitor multiple networks from a single computer; just open multiple web pages, one for each network you are monitoring

## ■ Reports

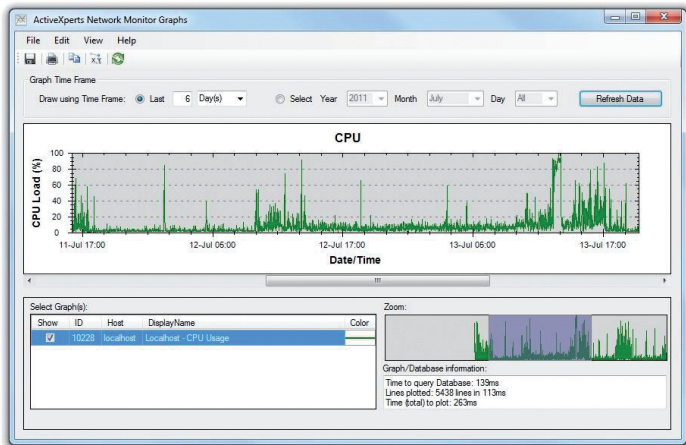
Create reports over a specified period of time. Customize reports by the use of XSL. Run reports ad hoc, or schedule reports. Use MS SQL or MySQL for maximum performance.

Features:

- Summary reports - contain reports aggregate fields, such as total up-time, total down-time etc
- Detailed Reports - show all state changes
- Filters - a comprehensive range of filters can be applied
- Create interactively (ad-hoc), from the command line or scheduled
- Ability to create new report templates
- Supported formats: XML, XML/XSL, HTML and CSV
- Report distribution via e-mail

## ■ Graphs

Create graphs to see the performance of a server or a group of servers.



## ■ Custom Checks

ActiveXperts Network Monitor has a comprehensive set of built-in monitoring checks; all built-in checks also come as a PowerShell script and VBScript script. This allows administrators to modify checks to meet their requirements. The Network Monitor Engine can process up to 32 PowerShell/VBScript/Shell scripts simultaneously.

## ■ Notifications

ActiveXperts Network Monitor alerts through E-mail, Sms, Pager, Twitter or SnmpTrap when there's something wrong. Sms notifications require a Gsm modem.

## ■ Corrective Actions

After an unexpected condition has occurred, ActiveXperts Network Monitor can automatically correct the problem by:

- Rebooting a server
- Restarting (multiple) service(s)
- Running a batch-job, executable or PowerShell/VBScript program

## ■ Dependencies

Avoid a flood of notification messages when - for instance - a router fails, by configuring dependencies. Servers can depend on multiple servers; dependencies are transitive.

For example, if router A depends on router B, and router B depends on router C and router C fails, you'll be notified only about router C.

## ■ Advanced Features

- Auto-discovery function to lookup servers in a domain or subnet
- All built-in checks also have a scripted version (PowerShell and VBScript), so it can be fully customized
- Repetitive alerting and notifications
- Engine can be tuned; number of threads per check-type is configurable
- Maintenance periods configurable, to avoid notifications during maintenance hours
- Auto-backup feature, to backup configuration and scripts
- Many other advanced features

## System Requirements

- Windows 2008 (R2) / 2003 / 8 / 7 / Vista / XP. Both 32bit and 64bit on all supported Windows versions
- 100MB of free disk space
- Recommended: MS SQL Server 2005 (or higher) or MySQL 5.0 (or higher).

Visit [www.activexperts.com/network-monitor](http://www.activexperts.com/network-monitor) for more information.

Download your evaluation version at [www.activexperts.com/download](http://www.activexperts.com/download)

Requirements: Windows 2008 (R2) / 2003 / 8 / 7 / Vista / XP, 100MB of free disk space